



# TULA

# TULA

Perfect Balance





Front View



Side View



Back View

**Executive Chair**

- Polished Aluminum base with soft Floor Casters
- Class IV Gas Cylinder
- Synchro mechanism
- Upholstered Seat molded foam
- Mesh back with hand hold
- Height and width adjust arms



**Task Chair**

- Nylon base with soft floor casters
- Class 1V Gas Cylinder
- Synchro Mechanism
- Upholstered Seat molded foam
- Mesh Back with hand hold
- Height Adjustable Arms

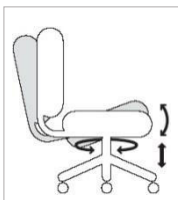
Back Height	
Seat Width	
Seat Depth	
Seat Height	
Height Range	



Height adjust arm



Slider arm



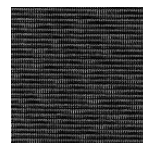
Tilt Mech



Synchro Mech

Standard Upholstery Options\*

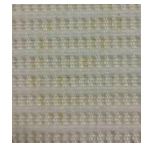
Mesh



Coal



Grey



White

Fabrics



Black



Charcoal



Slate

\*Customer Specified mesh and Fabrics option available



Environmentally Friendly Ergonomic Seating based  
on Yoga principles for posture and comfort

Designed in California  
Assembled in California

Minority Woman Owned Business

[www.auraseating.com](http://www.auraseating.com)  
[auraseating@gmail.com](mailto:auraseating@gmail.com)

23896 Madison Street  
Torrance, CA 90501

Phone: (310) 373-0129  
Fax: (310) 347-4401